

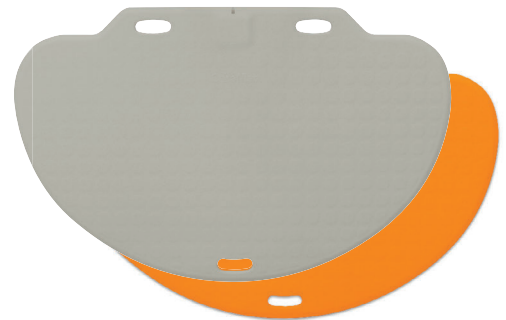


# CareMat C

The pressure-sensitive mat for supervision of people with dementia and disorientation

## Product Description

CareMat is used in retirement and nursing homes as well as in hospitals and similar facilities. It is placed beside the patient's bed and connected to the in-house nurse call system. As soon as the person leaves the bed and steps onto the CareMat, a signal is triggered via the nurse call system. This allows the personnel on duty to establish at any time of the day or night, when and where a patient got out of bed. As a result, CareMat contributes to providing assistance immediately, thus significantly reducing the risk of falls or the danger of patient wandering.



## Selection chart

CareMat **C** **0** **1** **T** **E868**

### Dimension code

- A 1100 x 700 mm
- B 700 x 400 mm
- C 1100 x 700 mm, semi-circular
- M 283 x 202 mm, sample

### Colour code

- 0 Careyellow
- 1 Caregrey

### Case code

- 1 56 x 38 x 9.6 mm
- 5 Ekahau A4 WiFi Tag

### Type code

- E Empty
- C Open cable head
- P PCB, additional functions
- T Transmitter

### Transmitter type code

- B434 TeleAlarm 434.01 MHz
- E868 ELDAT 868.30 MHz
- L433 Lehmann electronic 433.92 MHz
- L869 Lehmann electronic 869.2125 MHz
- L869.23 Lehmann electronic 869.2375 MHz
- EK2.4 Ekahau 2.4 GHz

## Features

- Dimensions 1100 x 700 mm
- Hard-wired and wireless versions
- A robust and reliable alarm sensor
- Hygienic: Easy to clean and resistant to bodily fluids

## Content

- 1 Product description  
Selection chart  
Features
- 2 Model list  
Technical specifications
- 3 Technical specifications  
CareMat dimensions
- 5 Case dimensions
- 6 Product details

## Model list

Product	Colour	Part number	Description
CareMat	C01E	Careyellow	1100 x 700 mm, semi-circular / empty housing
	C11E	Caregrey	
CareMat	C01C	Careyellow	1100 x 700 mm, semi-circular / cable
	C11C	Caregrey	
CareMat	C01P	Careyellow	1100 x 700 mm, semi-circular / universal PCB with cable
	C11P	Caregrey	
CareMat	C01T B434	Careyellow	1100 x 700 mm, semi-circular / TeleAlarm radio transmitter 434.01 MHz
	C11T B434	Caregrey	
CareMat	C01T E868	Careyellow	1100 x 700 mm, semi-circular / ELDAT radio transmitter 868.30 MHz
	C11T E868	Caregrey	
CareMat	C01T L433	Careyellow	1100 x 700 mm, semi-circular / Lehmann radio transmitter 433.92 MHz
	C11T L433	Caregrey	
CareMat	C01T L869	Careyellow	1100 x 700 mm, semi-circular / Lehmann radio transmitter 869.2125 MHz
	C11T L869	Caregrey	
CareMat	C01T L869.23	Careyellow	1100 x 700 mm, semi-circular / Lehmann radio transmitter 869.2375 MHz
	C11T L869.23	Caregrey	
CareMat	C05T EK2.4	Careyellow	1100 x 700 mm, semi-circular / Ekahau A4 WiFi Tag 2.4 GHz
	C15T EK2.4	Caregrey	

## Technical Specifications

### Characteristics

#### ■ CareMat General

Dimensions	Surface: 1100 x 700 x 9.5 mm / height standard case 1: 14.5 mm, height Ekahau WiFi case 5: 20 mm
Weight	6.5 kg
Material	Polyurethane PU
Colour	Careyellow / Caregrey
Surface	Nub structure with sloped edges
Person activation weight	Min. 10 kg
Chemical resistance	Water, bodily fluids, commercially available disinfectants, max. 70 % vol. alcohol
Protection class	IP54, dust- and splash-proof
Temperature range	0 to +55 °C

#### ■ CareMat versions with cable

##### CareMat C01E / C11E

Connection	This CareMat can be equipped by cable or various transmitters.
EC-Conformity	RoHS 2011/65/EU

##### CareMat C01C / C11C

Cable	Length 3 m, diameter 5.2 ± 0.2 mm, cable colour white
Cable type	4-wire, LiYYv 4 x 0.34 mm², wire colours BN/YE/GN/WH, open cable head
Cable as spare part	According to above specifications available, part number 307131
Signal output	Normally open contact (NO)
Admissible capacity	Max. 50 mA at 48 V AC/DC
EC-Conformity	RoHS 2011/65/EU, GPS2001/95/EC

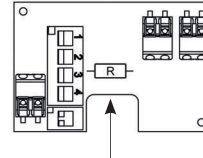
## Characteristics

### CareMat C01P / C11P

Cable	Length 3 m, diameter 5.2 ± 0.2 mm, cable colour white
Cable type	4-wire, LiYYv 4 x 0.34 mm², wire colours BN/YE/GN/WH, open cable head
Cable as spare part	According to above specifications available, part number 307131
Signal output	Normally open contact (NO) or resistance monitoring (acc. to VDE 0834)
Operating voltage	3-24 VDC
Operating current	Max. 25 mA
EC-Conformity	RoHS 2011/65/EU, EMC 2014/30/EU
Functionalities universal PCB	The CareMat C01P / C11P (P = circuit board) includes a universal circuit board in the housing. The universal circuit board can be adapted to your needs by altering the switch positions. The wiring on the universal circuit board must not be removed. The connections are protected against wrong polarity of input voltage.

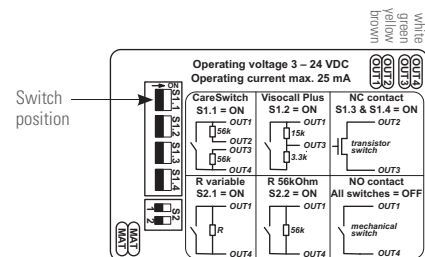
#### Variable resistance R

The universal circuit board has two connector sockets for commercially-available wired resistors. A call resistor that is specifically for the call system for line monitoring can be installed in this. The connecting wiring should have a diameter between 0.38 and 0.56 mm. The socket spacing should be 14 mm.



#### NC contact

The NC (normally closed) contact option, which can be selected on the universal PCB, is a transistor circuit. It operates according to the quiescent current principle. If the CareMat is not actuated, a quiescent current flows through the NC contact as a result of the externally applied voltage. If the resident / patient actuates the CareMat by stepping on it, this NC contact is opened. This can be detected by a nurse call system operating according to the quiescent current principle that monitors the current flow.



## CareMat wireless versions

### CareMat C01T B434 / C11T B434

Radio transmitter	TeleAlarm, 1 channel, unidirectional
Radio frequency	434.01 MHz, TeleAlarm protocol
Radio range	up to 30 m in buildings, dependent on structural building conditions (up to 250 m in free field)
Battery type	1 x CR2032, 3V Lithium button cell
Battery lifetime	3 years (at 3 alarms and 1 daily test transmission)
EC-Conformity	RoHS 2011/65/EU, RED 2014/53/EU

### CareMat C01T E868 / C11T E868

Radio transmitter	ELDAT, 1 channel, unidirectional
Radio frequency	868.30 MHz, EasyWave® protocol
Radio range	up to 30 m in buildings, dependent on structural building conditions (up to 250 m in free field)
Battery type	1 x CR2032, 3V Lithium button cell
Battery lifetime	2 years
EC-Conformity	RoHS 2011/65/EU, RED 2014/53/EU

### CareMat C01T L433 / C11T L433

Radio transmitter	Lehmann electronic VarioRec®, 1 channel, unidirectional
Radio frequency	433.92 MHz, VarioRec® protocol
Radio range	up to 30 m in buildings, dependent on structural building conditions (up to 100 m in free field)
Battery type	1 x CR2032, 3V Lithium button cell
Battery lifetime	3 years
Battery monitoring	Battery low message
EC-Conformity	RoHS 2011/65/EU, RED 2014/53/EU

## Characteristics

### CareMat C01T L869 / C11T L869

Radio transmitter	Lehmann electronic VarioRec®, 1 channel, unidirectional
Radio frequency	869.2125 MHz, VarioRec® protocol
Radio range	up to 30 m in buildings, dependent on structural building conditions (up to 100 m in free field)
Battery type	1 x CR2032, 3V Lithium button cell
Battery lifetime	3 years
Battery monitoring	Battery low message
EC-Conformity	RoHS 2011/65/EU, RED 2014/53/EU

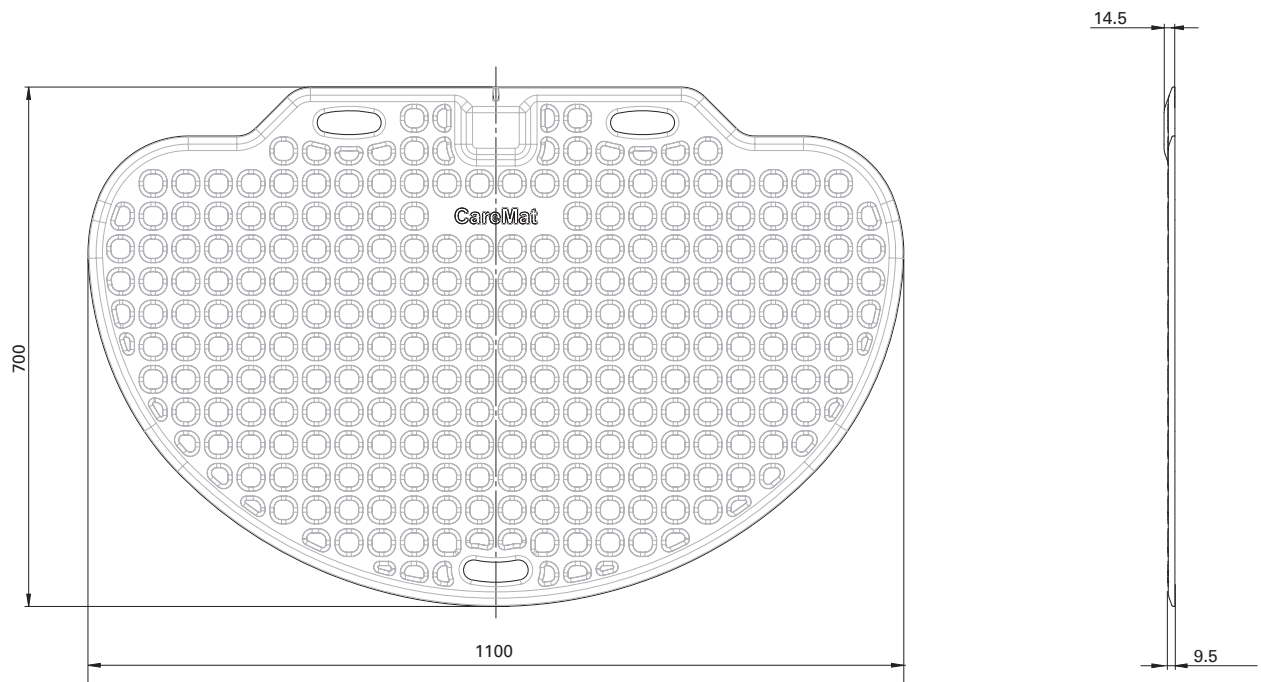
### CareMat C01T L869.23 / C11T L869.23

Radio transmitter	Lehmann electronic VarioRec®, 1 channel, unidirectional
Radio frequency	869.2375 MHz, VarioRec® protocol
Radio range	up to 30 m in buildings, dependent on structural building conditions (up to 100 m in free field)
Battery type	1 x CR2032, 3V Lithium button cell
Battery lifetime	3 years
Battery monitoring	Battery low message
EC-Conformity	RoHS 2011/65/EU, RED 2014/53/EU

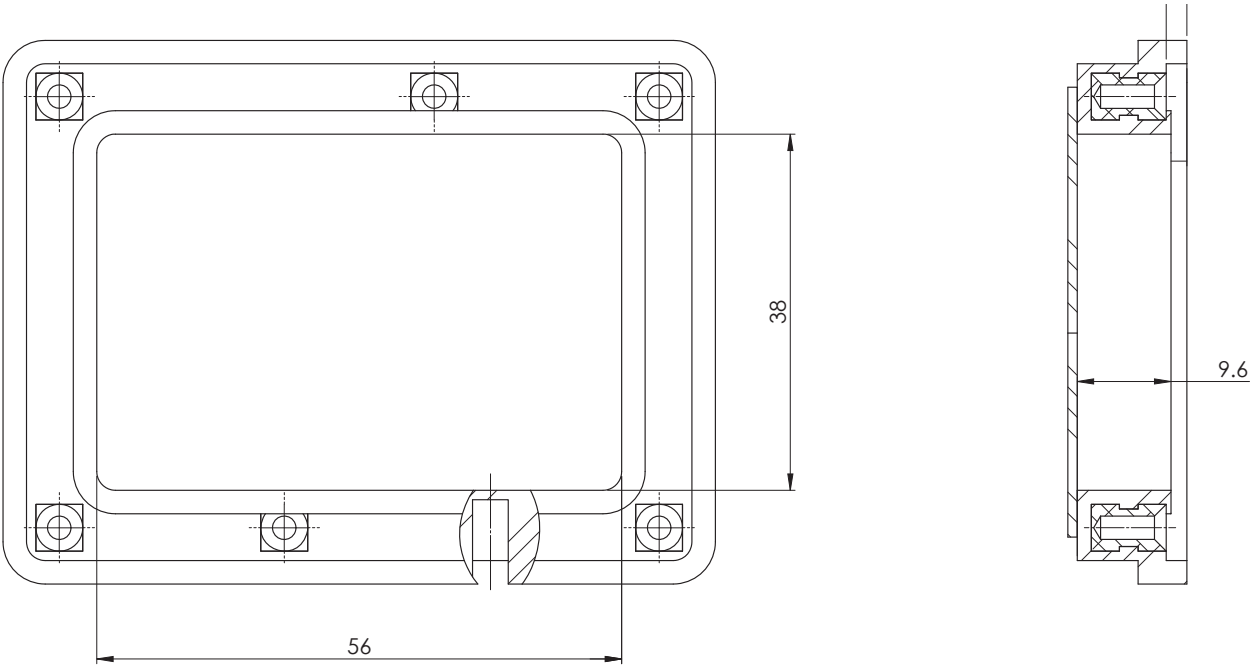
### CareMat C05T EK2.4 / C15T EK2.4

Radio transmitter	EkaHau A4 WiFi Tag
Radio frequency	802.11b/g 2.4GHz Wi-Fi networks
Radio range	up to 40 m @ 11Mbit/s in buildings, dependent on structural building conditions (up to 60 m @ 2Mbit/s in free field)
Battery type	2 x CR2, 3V Lithium round cell
Battery lifetime	18 months (in 24h by 4 interval alive events / 2 CareMat movement events / 3 person step on events)
Battery monitoring	Battery low message
EC-Conformity	RoHS 2011/65/EU, RED 2014/53/EU

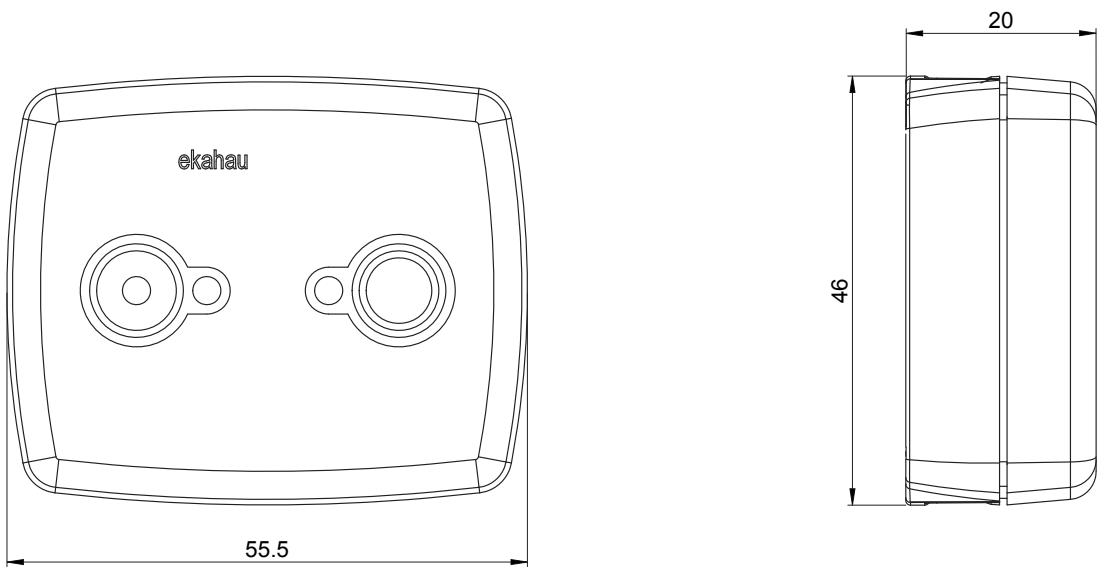
## CareMat Dimensions



1 Case Dimensions (Standard)

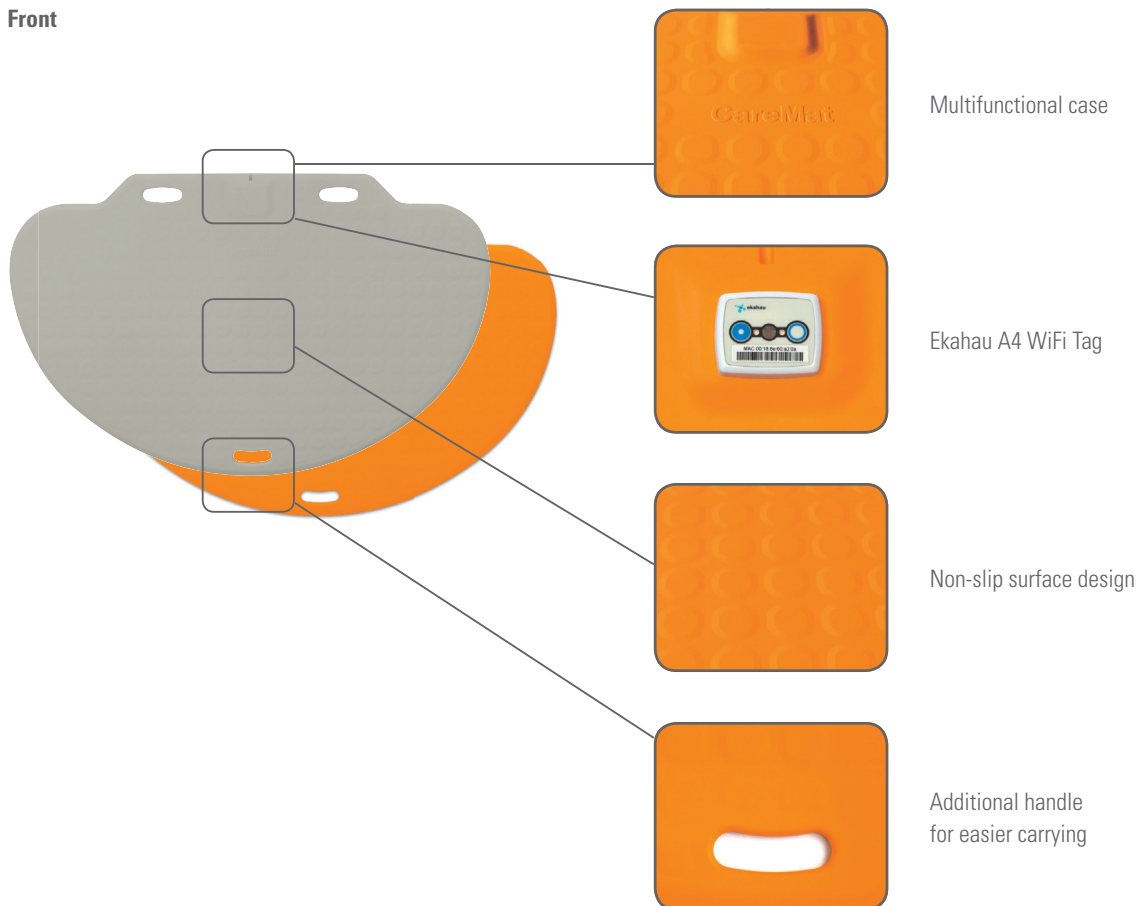


5 Case Dimensions (Ekahau)

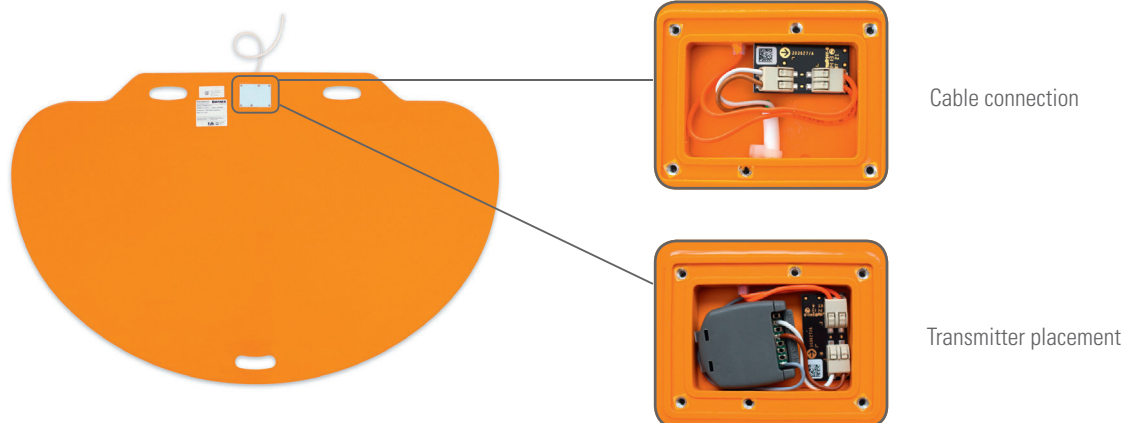


## Product Details

### Front



### Back



For more information contact



1300 871 322  
micromaxhealth.com  
info@micromaxhealth.com

