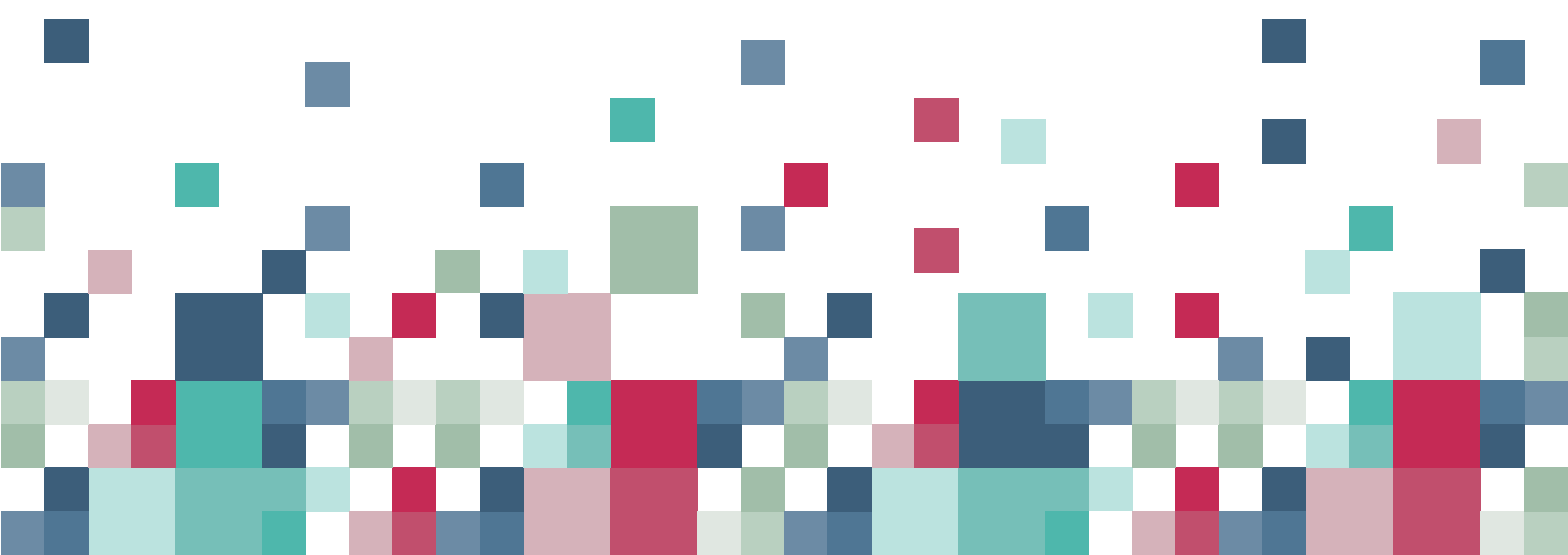




# Reactivate Dormant Onyx Battery Quick Start Guide



# Reactivate Dormant Battery Quick Start Guide



In order to reduce the auto-self power consumption Onyx may set the battery into "sleep/dormant" mode before shipping.

When the battery is placed in this dormant mode it is effectively deactivated which means the battery will not be able to provide power output and it may not respond when pressing the capacity indicator button.

If this is the case then you will need to "reactivate" the dormant battery (ie. awaken it before using it) by following the steps below:

## USING THE CHARGER

1. Connect the power adaptor to either the 2 slot or 6 slot battery charger and ensure the power outlet is switched on.



2. Place the dormant battery within the battery charger cradle.



3. Press the power button on the battery to see when the battery springs into life ie. LED will light up. (Usually within a few minutes but could take 2-3 hours before LED glows).



4. Once the battery is reactivated one or all of the LED light bars will light up.

5. Leave the battery in the cradle to charge until it is fully charged (ie. **all** LED light bars are lit when you press the power button).

