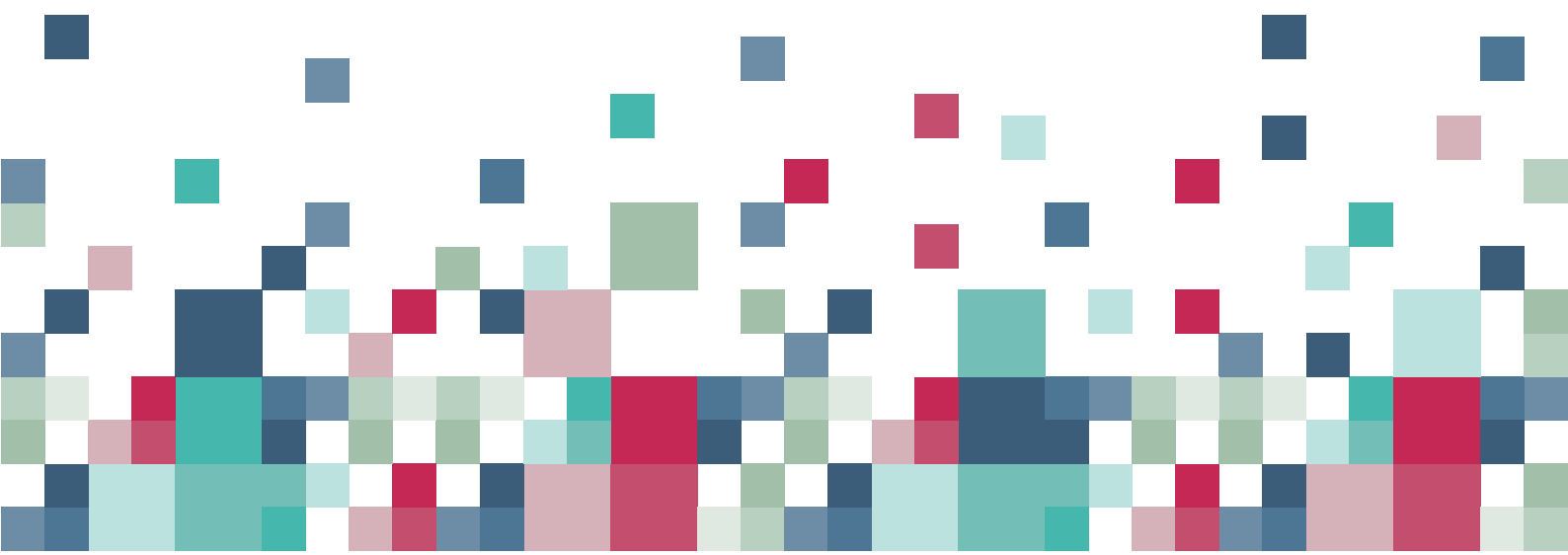




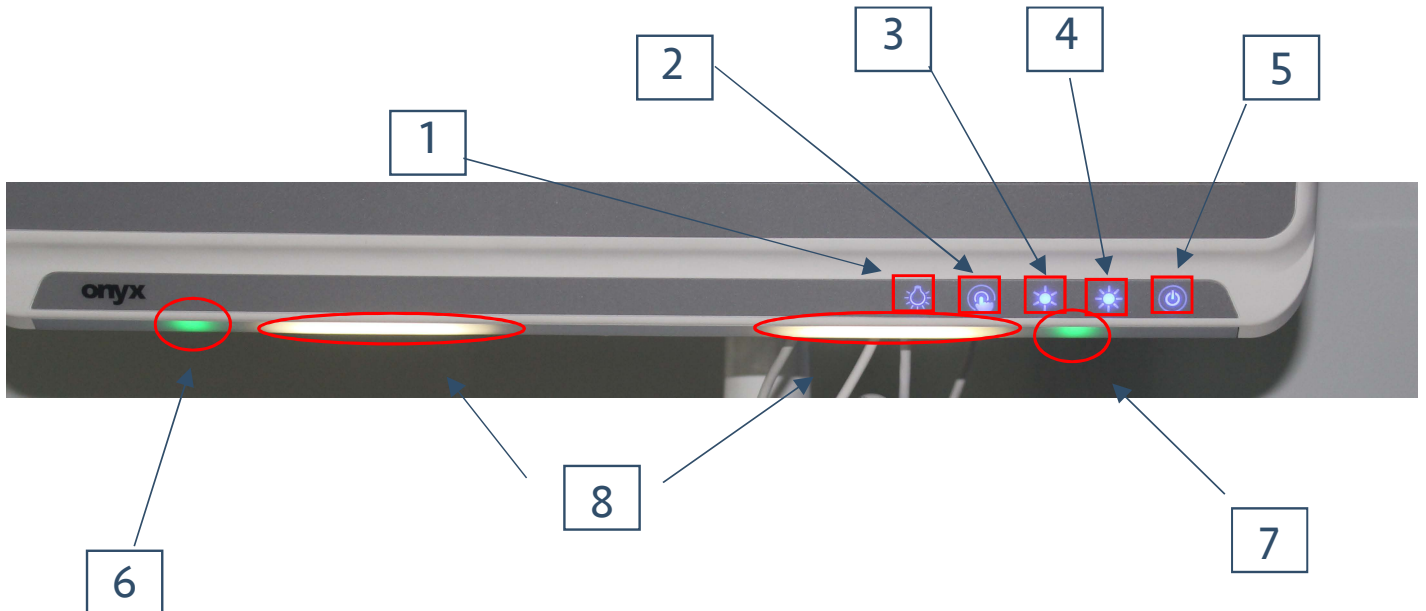
Venus 222 (2016)

Quick Navigation Guide



Venus 222 (2016)

Quick Navigation Guide



LEGEND:

1. Switch to turn on & off courtesy lights (no.8)
2. Switch to turn on & off touch screen
3. Switch to decrease the brightness of the screen
4. Switch to increase the brightness of the screen
5. Switch to start the Venus.
6. Indication light for left battery status (green is 30% or more, orange is less than 30% and battery change and charging is highly recommended)
7. Indication light for right battery statuses
8. Courtesy light (turn on & off via switch no.1)

Venus 222 (2016) Quick Navigation Guide



Legend:

1. Push button to activate the LED battery status.
2. LED battery status indicator (each lit up LED represents 20%. In the above picture the battery 61% to 80% of its charged capacity).



figure 1



figure 2

To remove and replace batteries turn dials in the direction indicated. Once the battery is released as shown in Fig 2 the batteries can be removed and replaced with fresh batteries. **IMPORTANT NOTE** - While the Venus unit is switched on do not remove both batteries simultaneously replace one battery at a time.

If the Venus is switched on and both batteries are removed, important data can be lost and this could also damage the Venus operating systems files.